



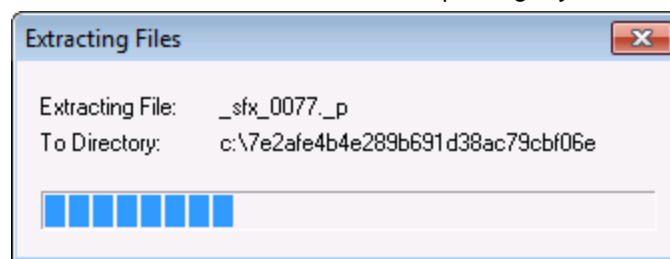
Article:Installing SQL Server 2008 R2 Express Guidance

Summary: This article is to help end users to install SQL Server 2008 R2 Express to work with ACTAtek Access Manager.

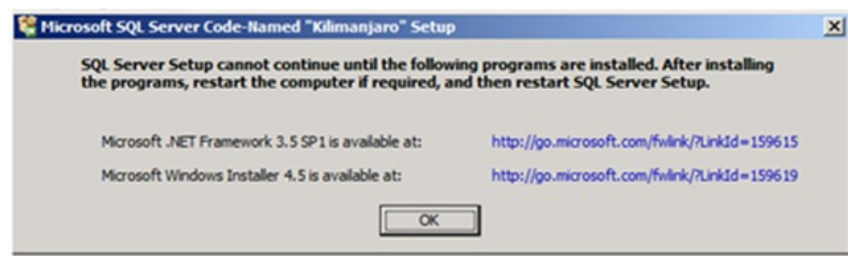
Available Express editions for download:

Express Package	If your system is?	If your system is?
Microsoft® SQL Server® 2008 R2 with Management Studio Express	x86 32bit (235MB)	x64 64bit (247MB)

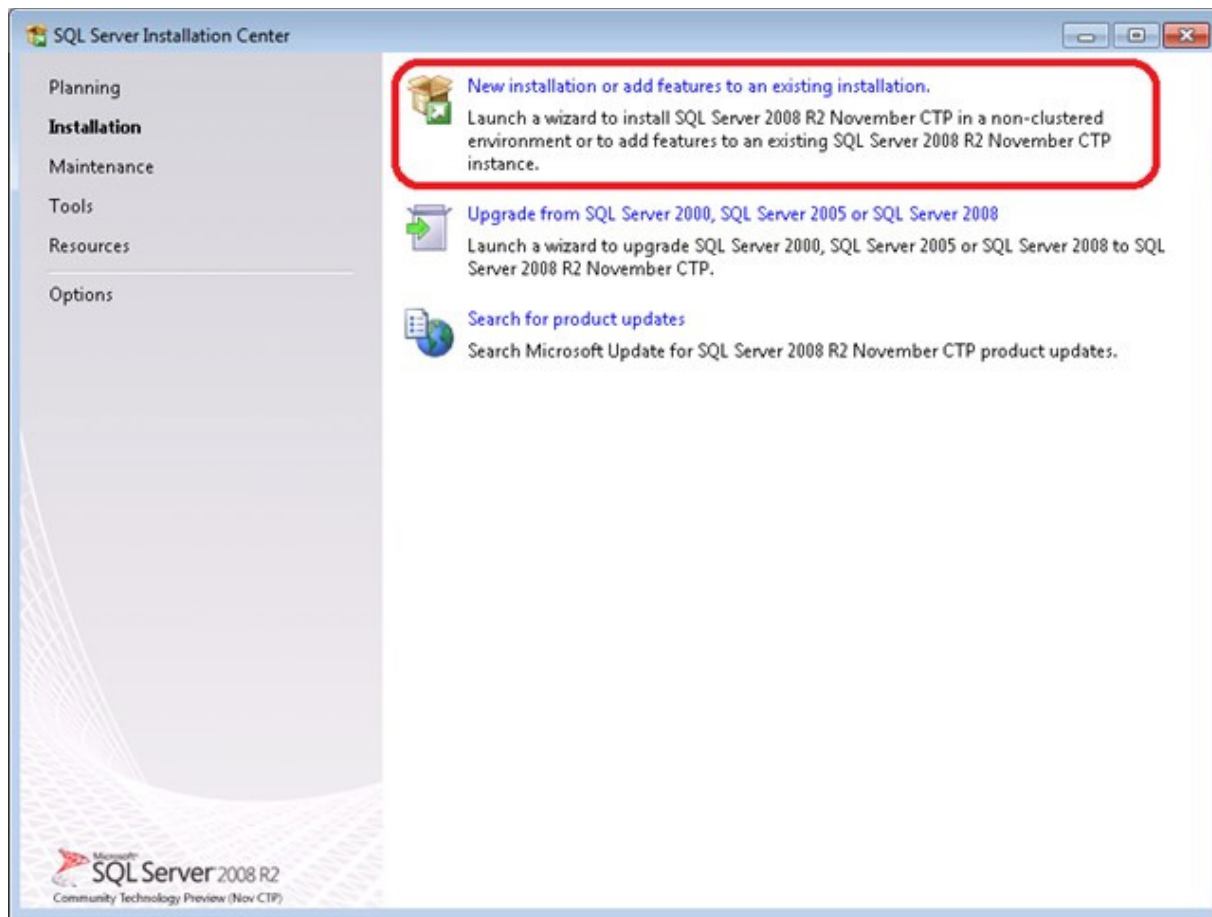
1. Launch the download installation package, you will then see the contents extracted to a temporary location.



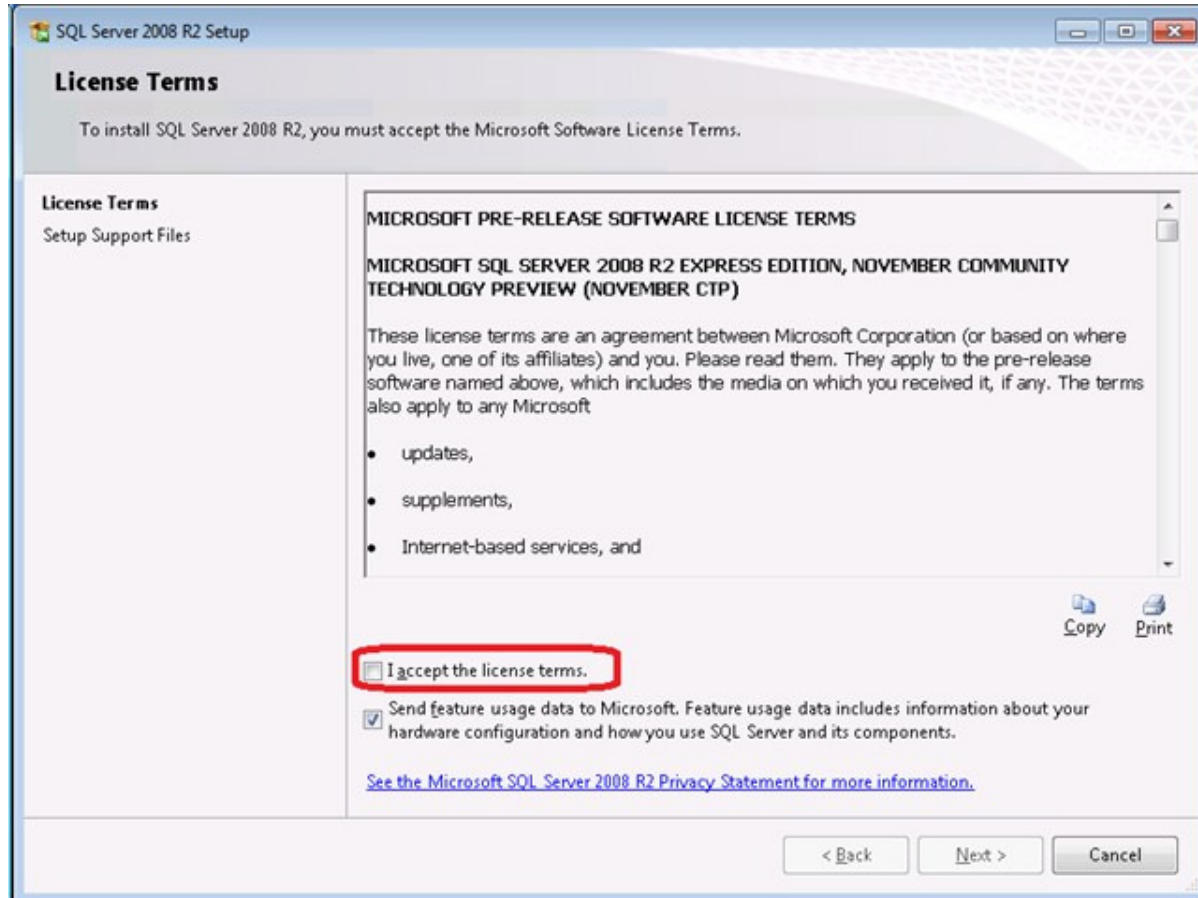
2. MS SQL Server Setup will check to determine whether all pre-reqs are installed or not. If not, you will be prompted to install.



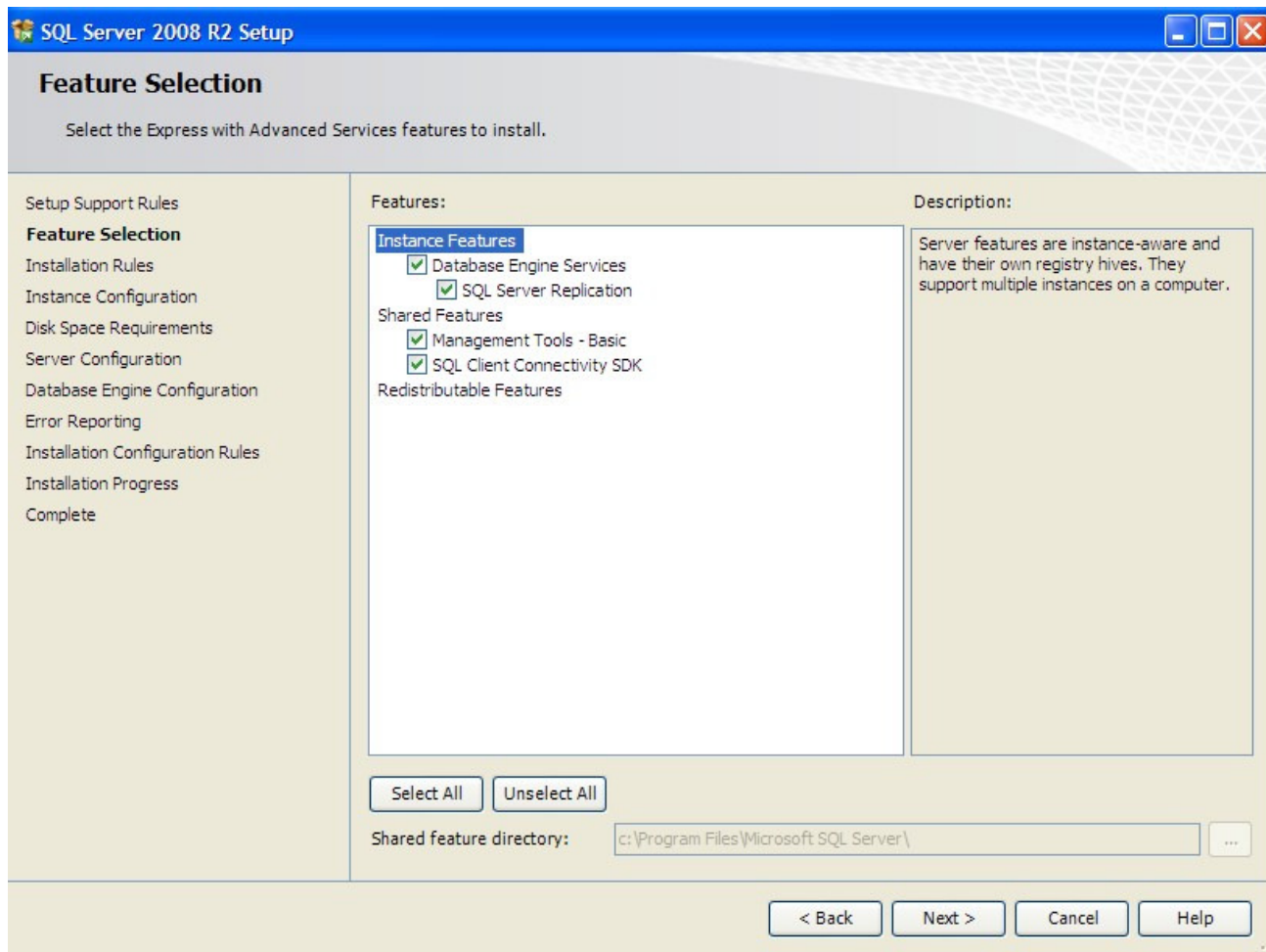
3. The Installation Center will then launch. Click on "New installation or add feature to an existing installation" to start the Installation Wizard.



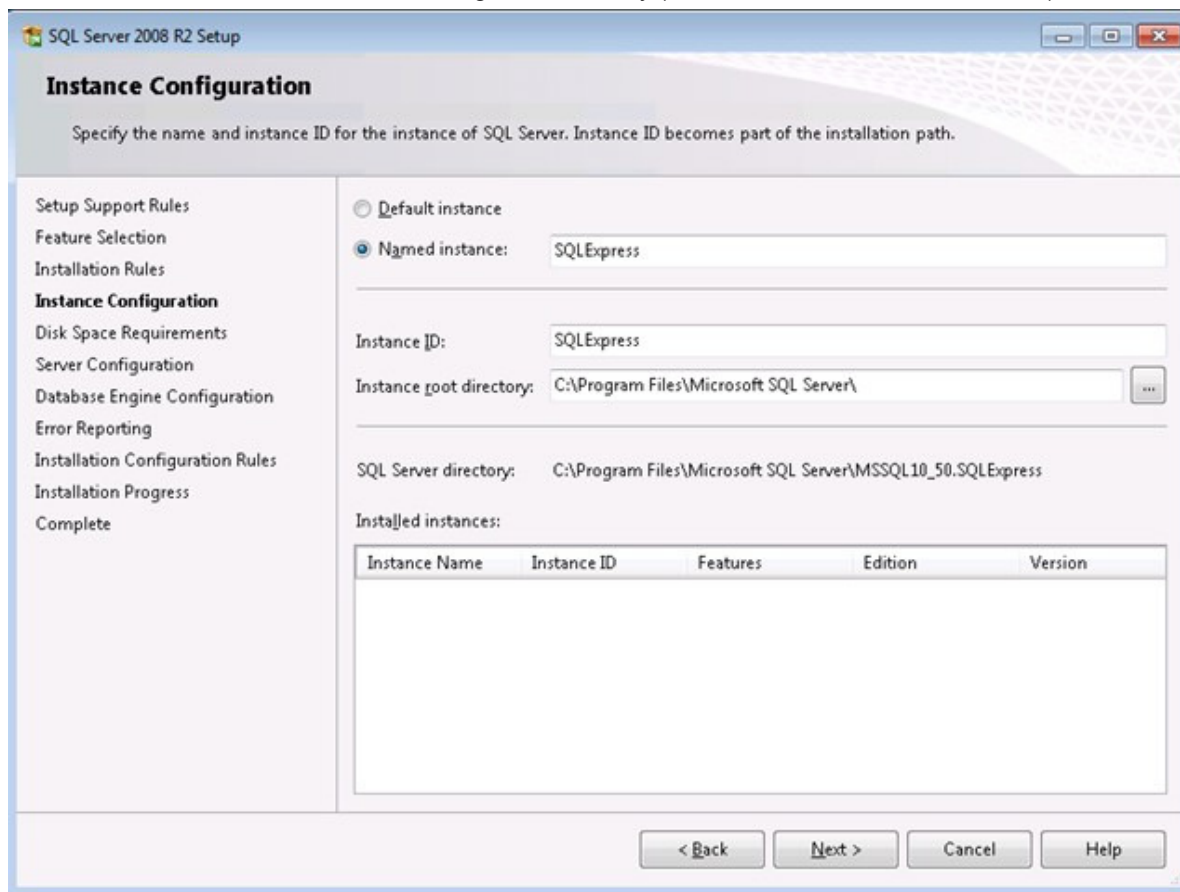
4. Accept the license terms.



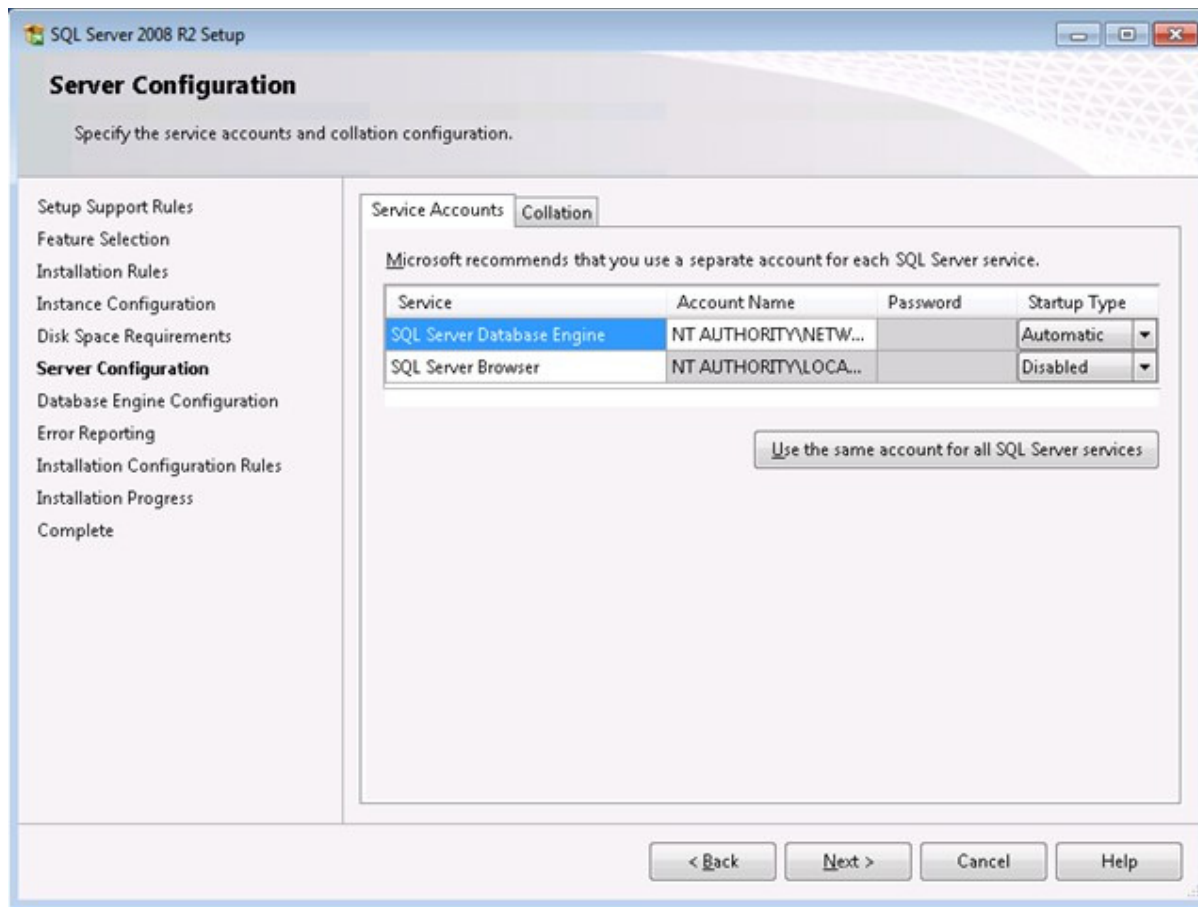
5. Then review the features to installed and where SQL Server will be installed. (*Select All is recommended.)



6. Review the Instance Name and change if necessary. (*Default name is recommended.)



7. Review the credentials that will be used for the services that will be created. (*Default setting is recommended.)



8. Tick the “**Mixed Mode (SQL Server authentication and windows authentication)**” and Enter the password for the “sa” account.

Example. For this installation, enter the password as actatek12 as show below.

SQL Server 2008 R2 Setup

Database Engine Configuration

Specify Database Engine authentication security mode, administrators and data directories.

Setup Support Rules
Feature Selection
Installation Rules
Instance Configuration
Disk Space Requirements
Server Configuration
Database Engine Configuration
Error Reporting
Installation Configuration Rules
Installation Progress
Complete

Account Provisioning | Data Directories | FILESTREAM

Specify the authentication mode and administrators for the Database Engine.

Authentication Mode

☐ Windows authentication mode

☒ Mixed Mode (SQL Server authentication and Windows authentication)

Specify the password for the SQL Server system administrator (sa) account.

Enter password:

Confirm password:

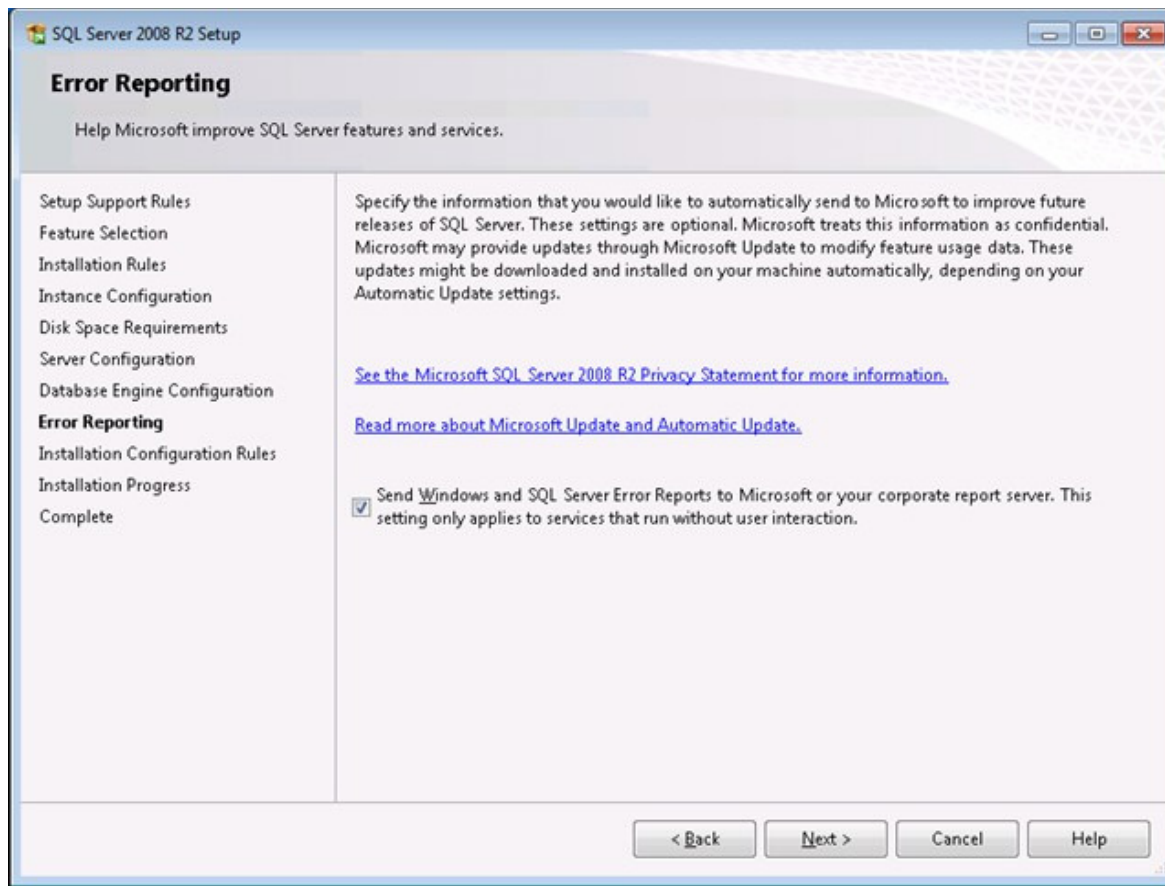
Specify SQL Server administrators

PETER\actatek-peter (actatek-peter)	SQL Server administrators have unrestricted access to the Database Engine.

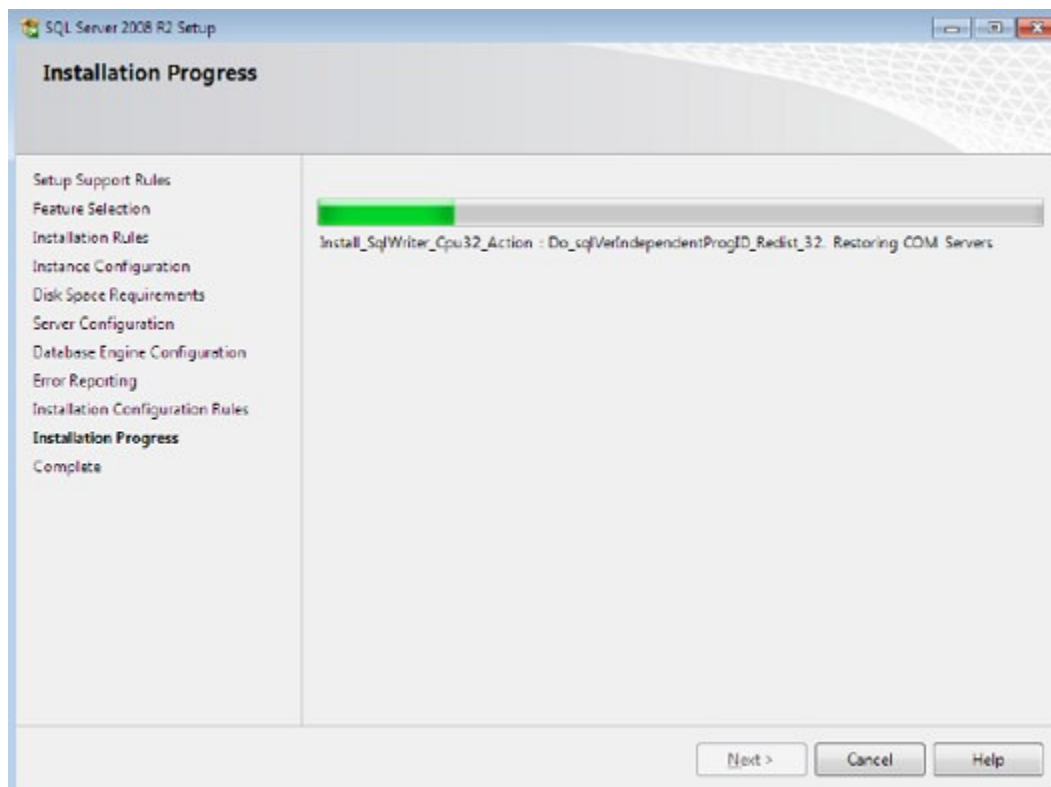
Add Current User Add... Remove

< Back Next > Cancel Help

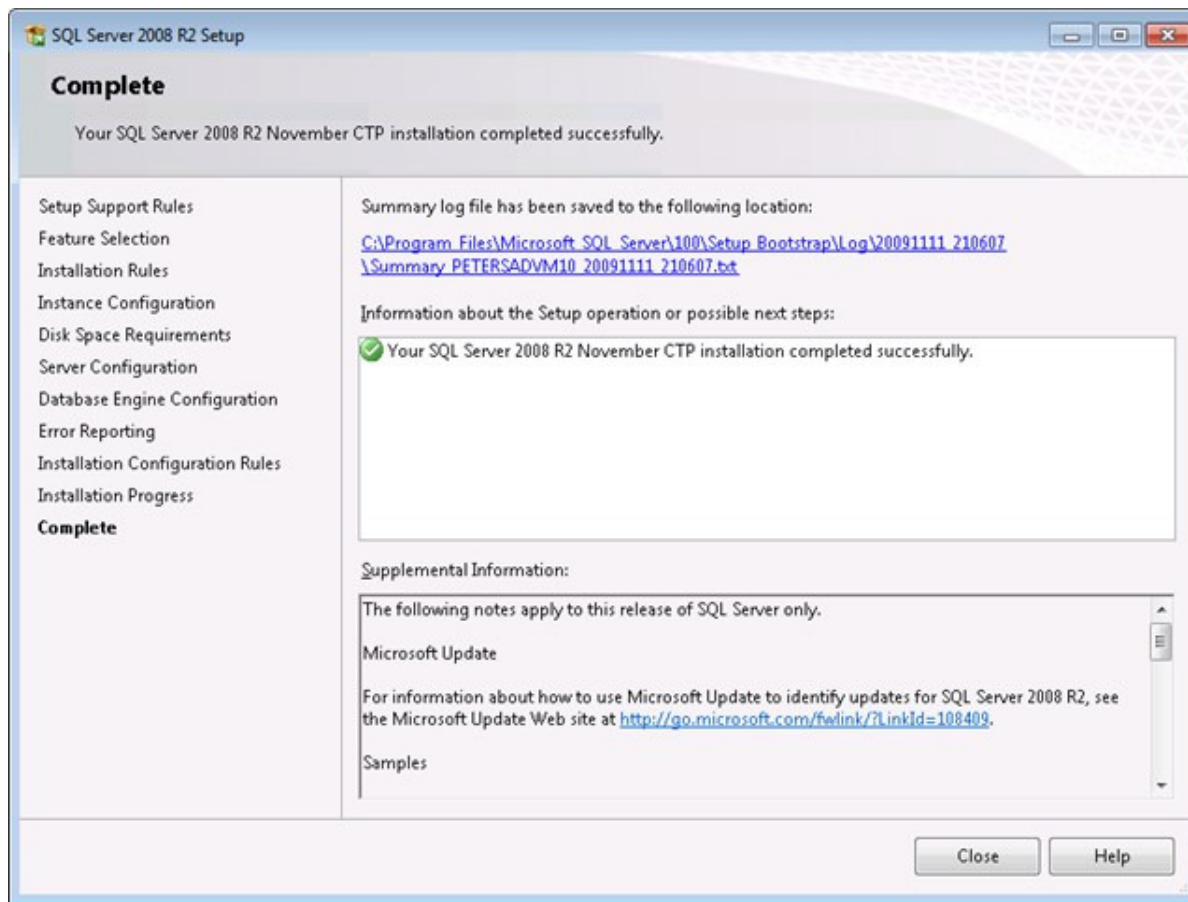
9. Review the Error Reporting settings. Click "Next >"



10. Once the configured, the installer will begin installing the MS SQL Server as shown below.



11. That's it!



12. It is required to Reboot your PC to start SQL Server 2008 R2.

