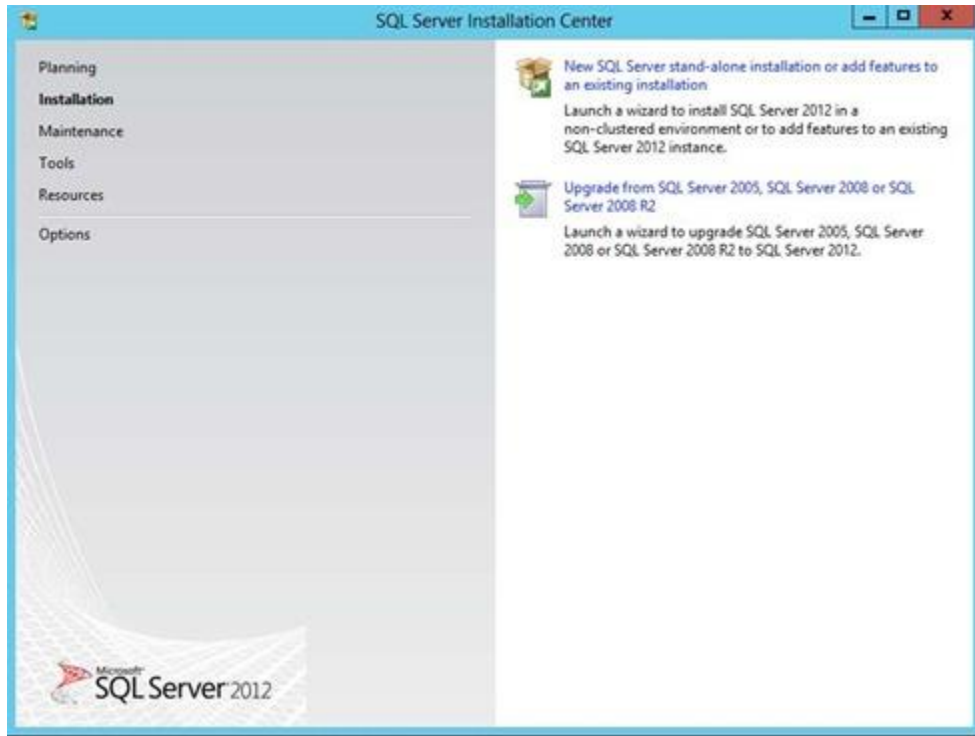


SQL Server 2012 Express Edition Installation Steps

Below are step by step instructions that will show you how to install SQL Server 2012 Management Studio Express

Step 1.

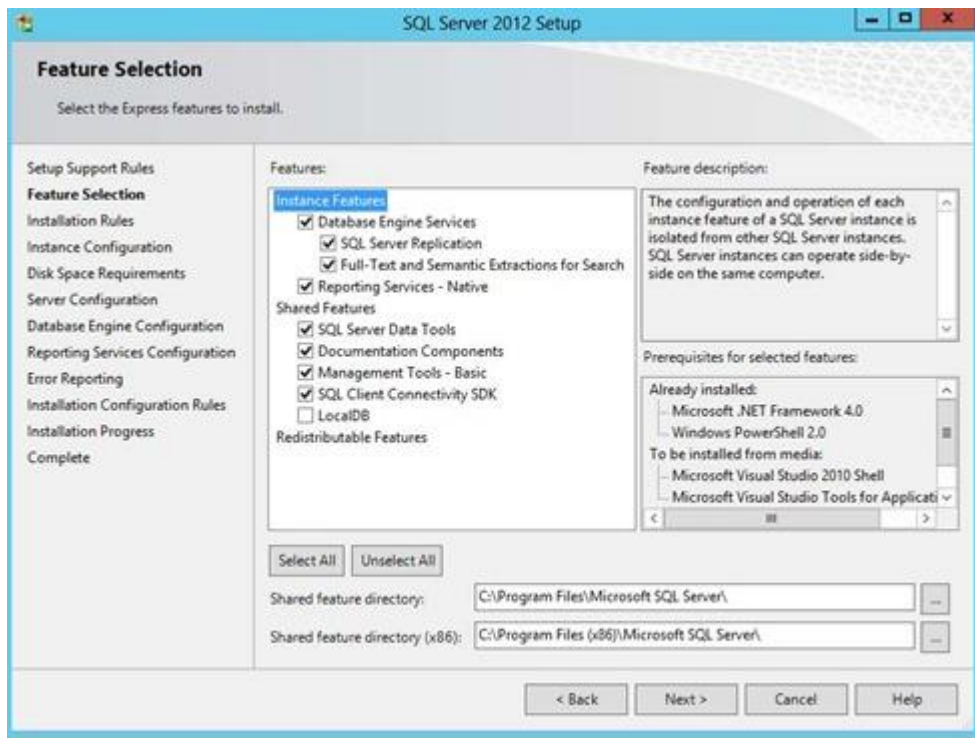
To begin, launch the install program and choose the top option to install a new stand-alone installation.



Step 2.

Read and accept the license agreement and click next. At this point you can choose the features that you want to install. You can also change the install folder if you do not want to install to the default location.

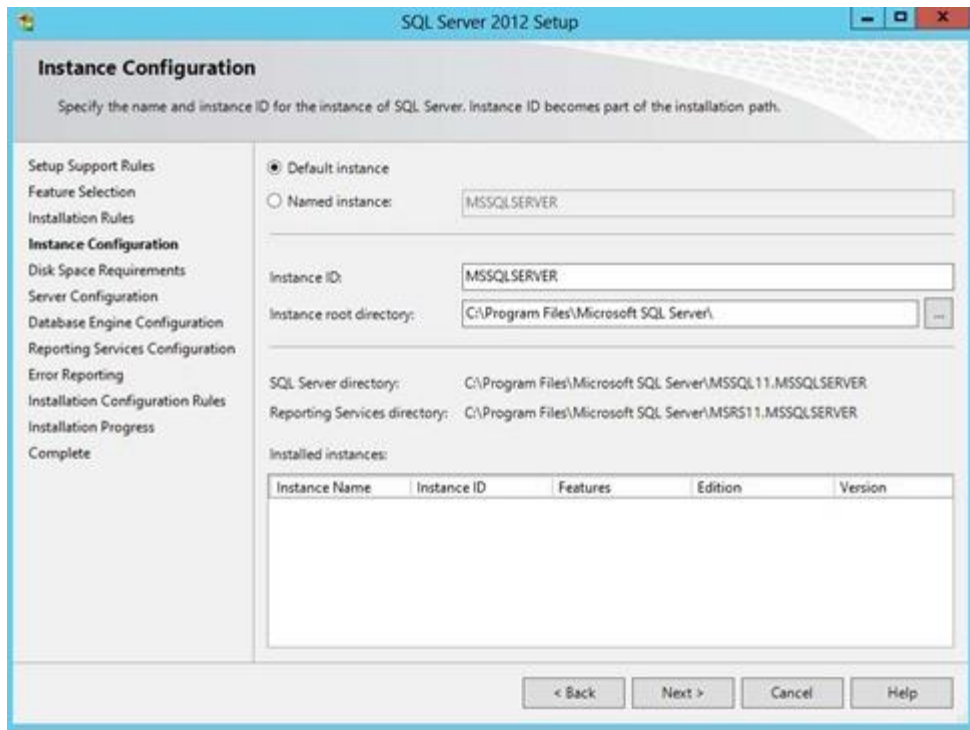
Click **Next** to continue.



Step 3.

Now you can configure the SQL instance. If this is the first instance of SQL Server on your computer, you probably want to change this setting to **Default instance**. If you already have another instance of SQL Server, you will want to use **Named Instance** and give it a name.

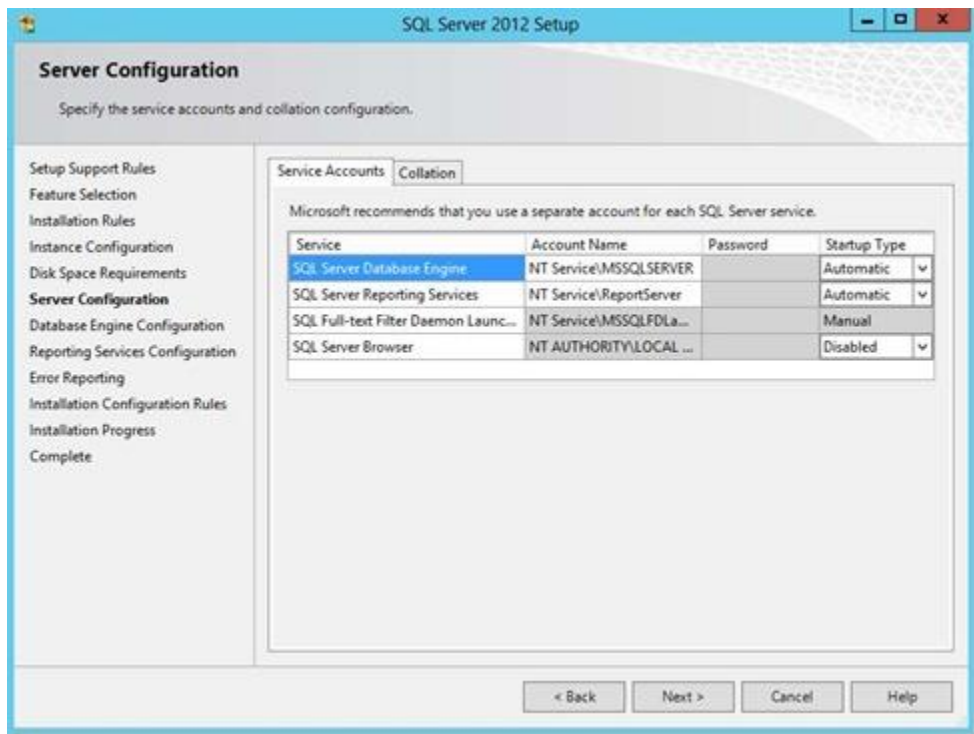
Click **Next** to continue.



Step 4.

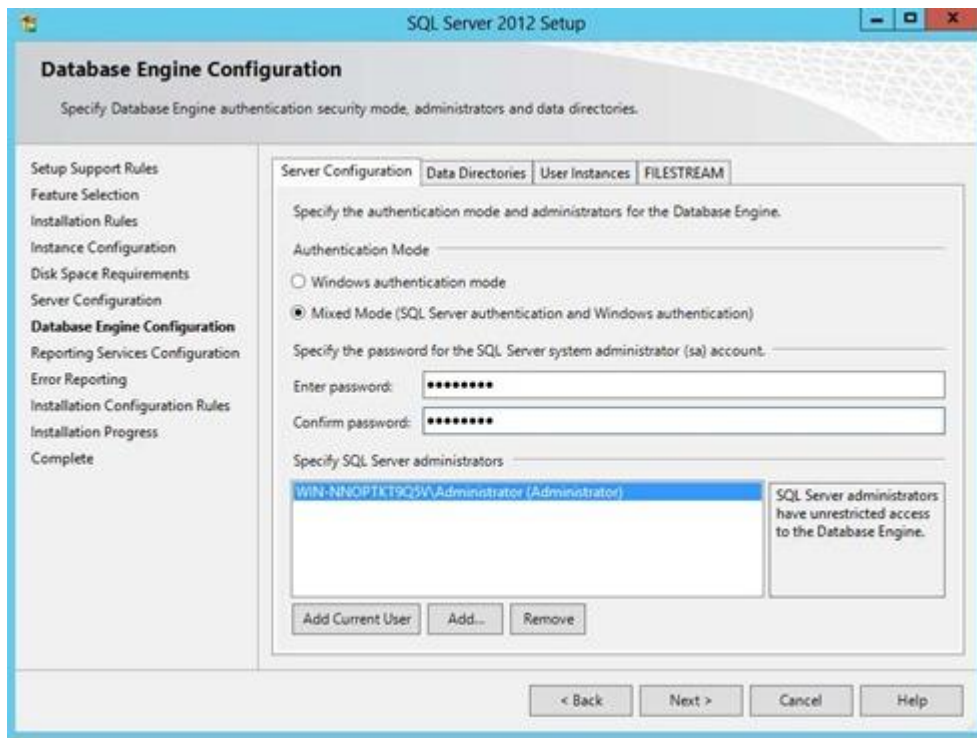
The next step is server configuration. From here you can change the Windows services associated with this instance of SQL Server. You can keep the defaults here unless you want to specify different user accounts for the services. You can also change the default collation settings if you are not in the United States.

Click **Next** to continue.



Step 5.

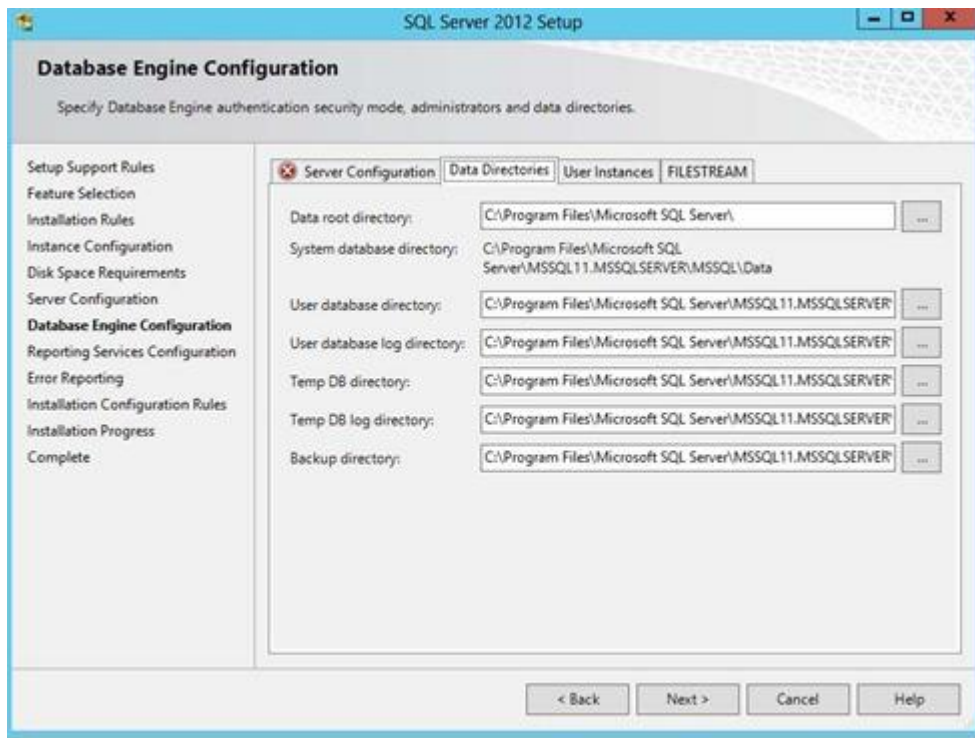
Now we come to the Database Engine configuration. On the Server Configuration tab you can select whether SQL Server will only authenticate using Windows accounts or you can choose **Mixed Mode** which will allow Windows accounts and SQL accounts. I usually set this to mixed mode and set a password for the "sa" account. You can also add or remove accounts that will be SQL administrators.



Step 6.

On the Data Directories tab you can change the locations of various files that SQL will use. Depending on your server configuration and the load that will be put on SQL, you may want to put the database and log folders on separate drives. For most people, you can leave the default values.

Click **Next** to continue.



Step 7.

The next step configures Reporting Services. Set this to **Install Only** if you don't need reporting services or may need them in the future. You can always go back and configure it later.

Click **Next** to continue.



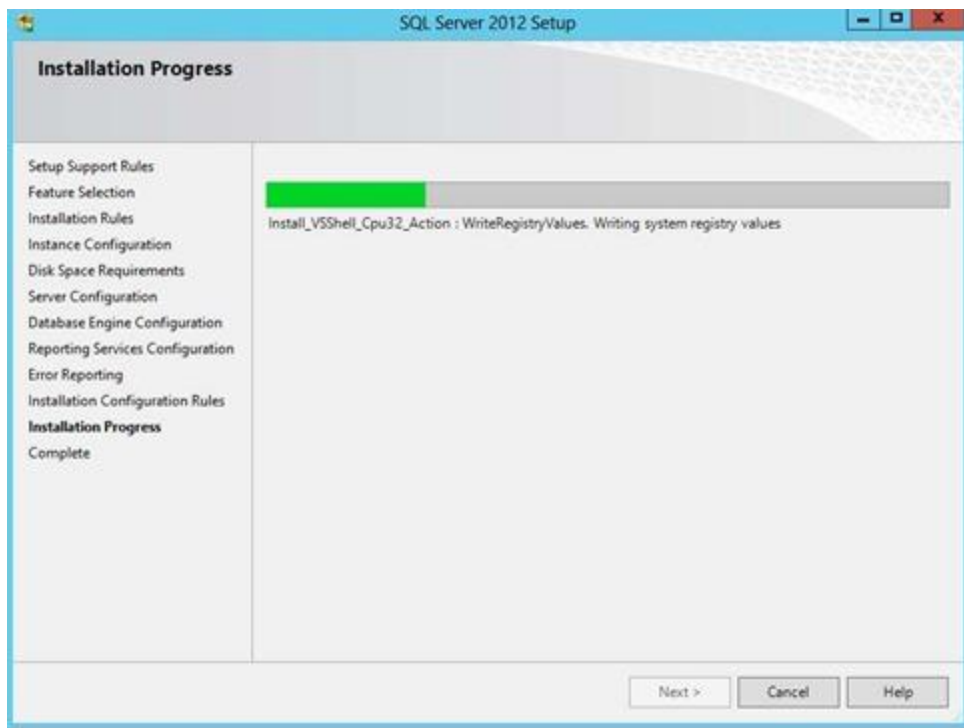
Step 8.

On the Error Reporting step, you can choose whether or not you would like to send error reports to Microsoft to help them improve future releases of SQL server.

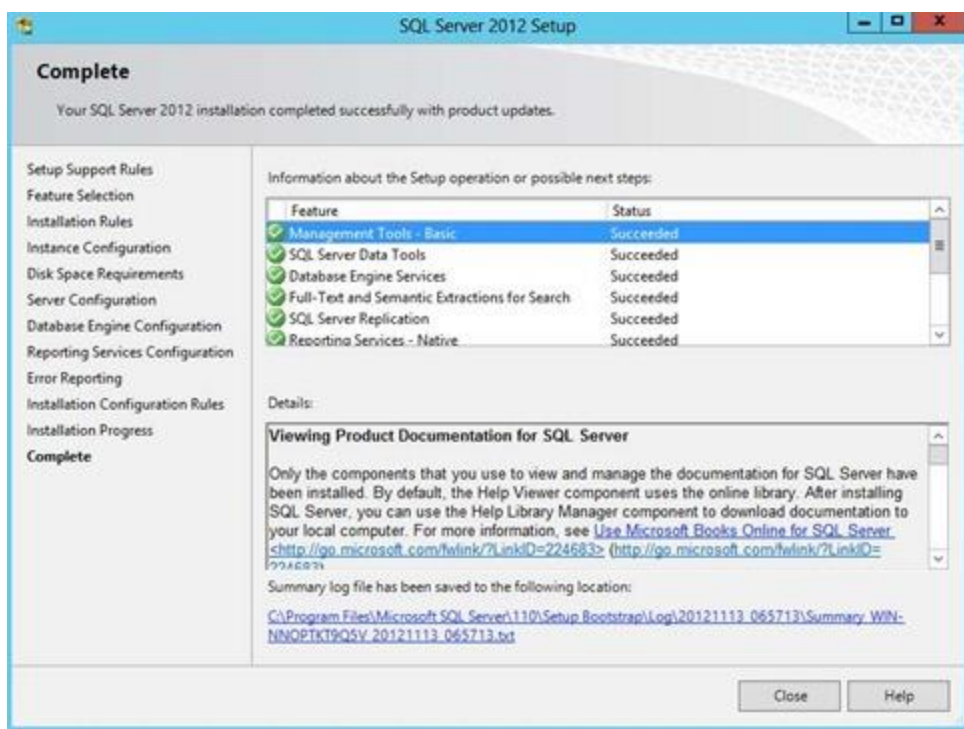
Click **Next** to continue.



At this point, SQL server will install on your computer. This could take a while to complete depending on the computer you are using.



Once the installation has completed, you will receive a screen showing the details of what was completed and if there were any problems.



If everything completed successfully, you can close the window and begin using your new copy of SQL Server 2012 .