

# ACTAtek Remote Registration Quick Install

January 2026  
Version 1.4

ACTAtek Ltd.

# 1 Introduction

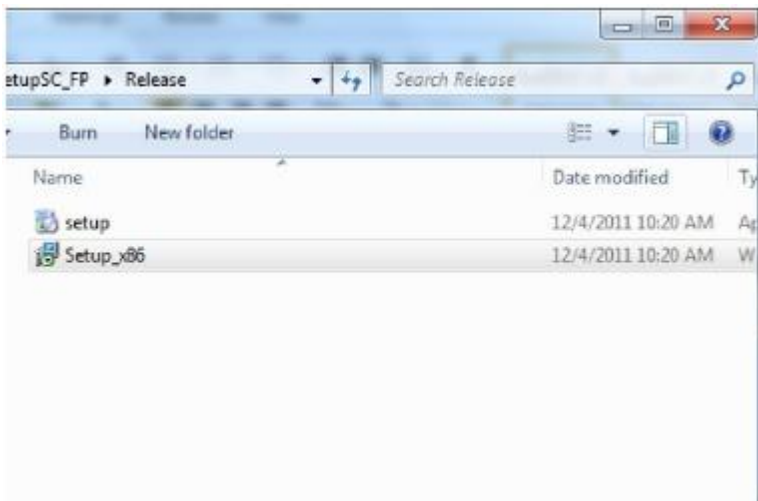
## 1.1 Purpose

This is an internal document to provide the reader an overview of the install and setup required for Remote Registration.

# 2 Installation

## 2.1 Installation Package

The install package comes in 32bit version for both 32bit and 64bit operating systems. Run the [setup.exe] to start the installation progress and follow the instructions as stated.



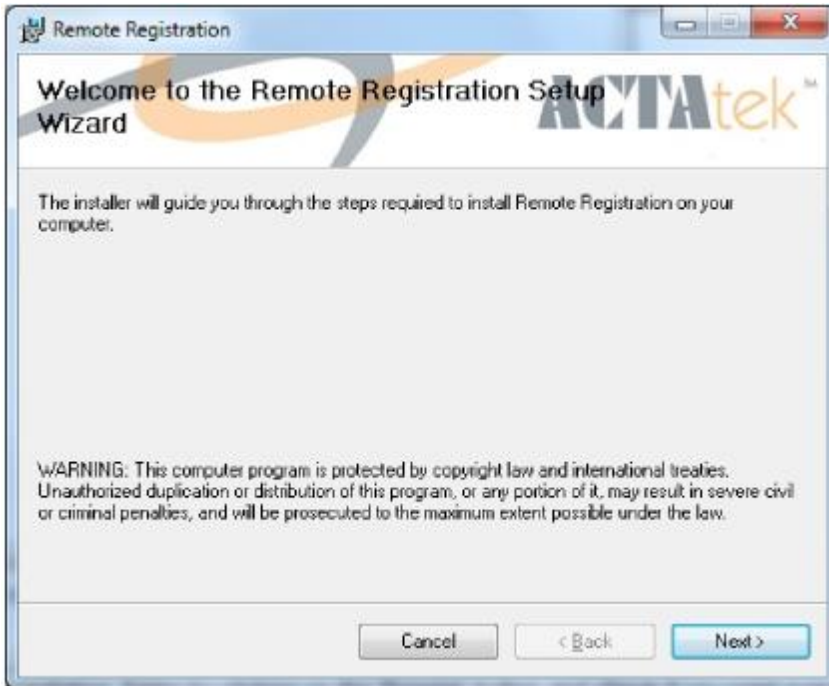


Figure 2: Installer Start-up Screen

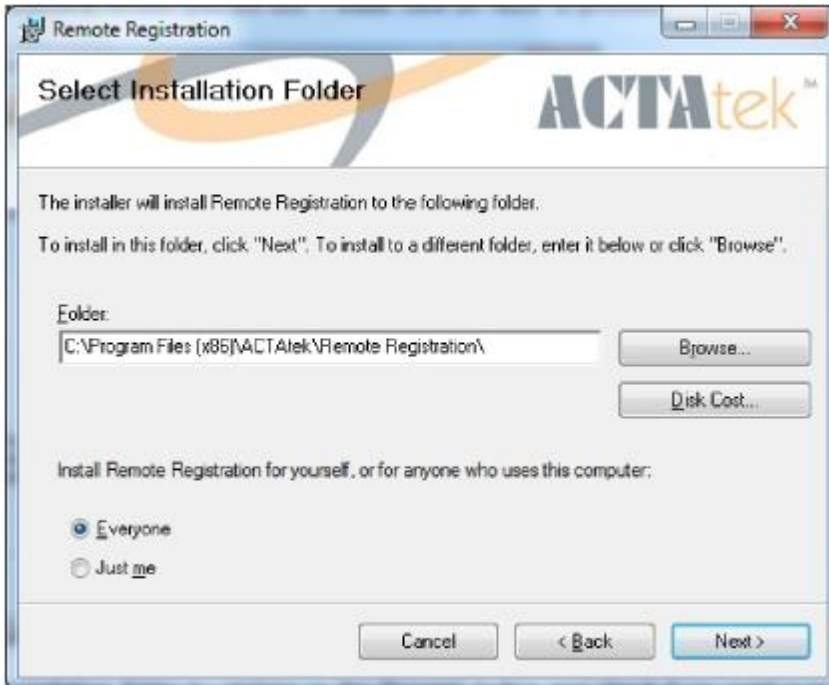


Figure 3: Installation folder selection

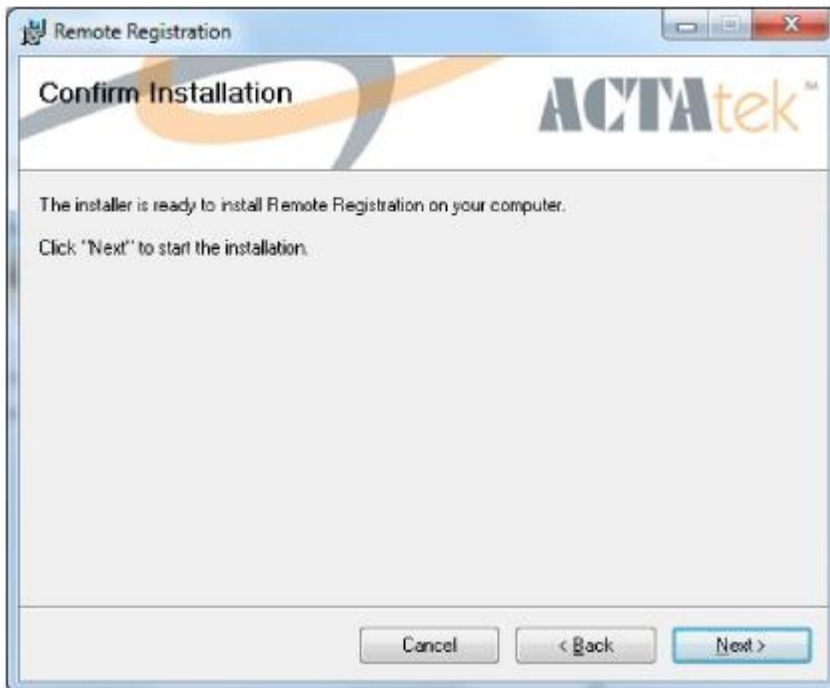


Figure 3: Confirmation dialog

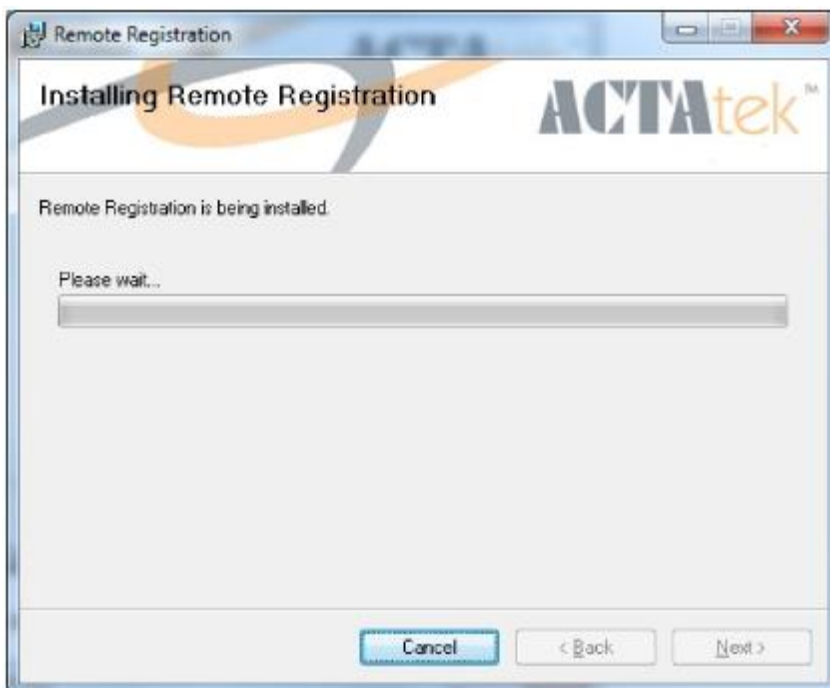


Figure 4: Installation progress

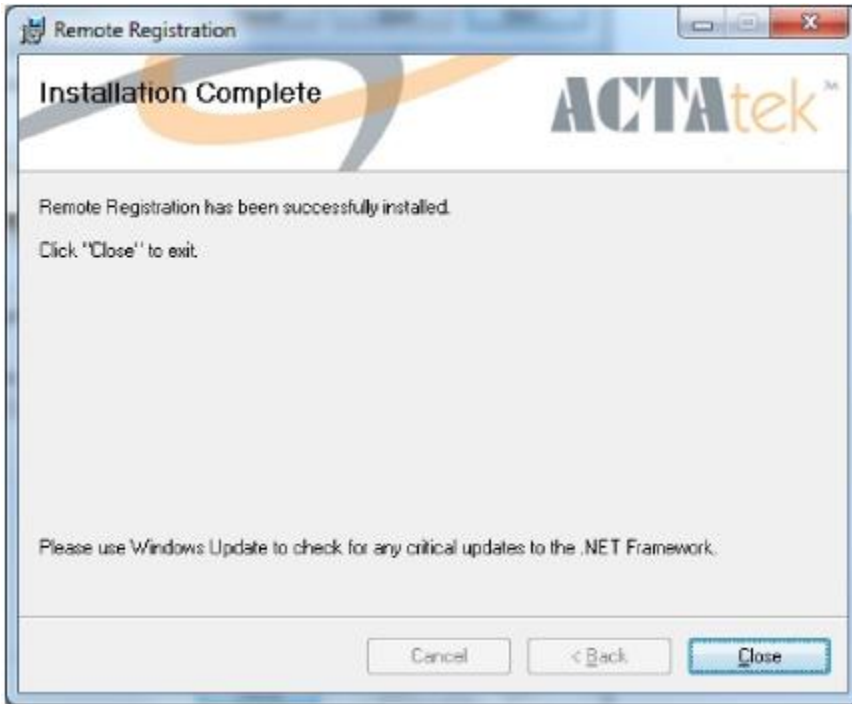


Figure 5: Installation complete

### 3 Configuring Remote Registration

Run [AMS (DE) Desktop Enrollment] software.

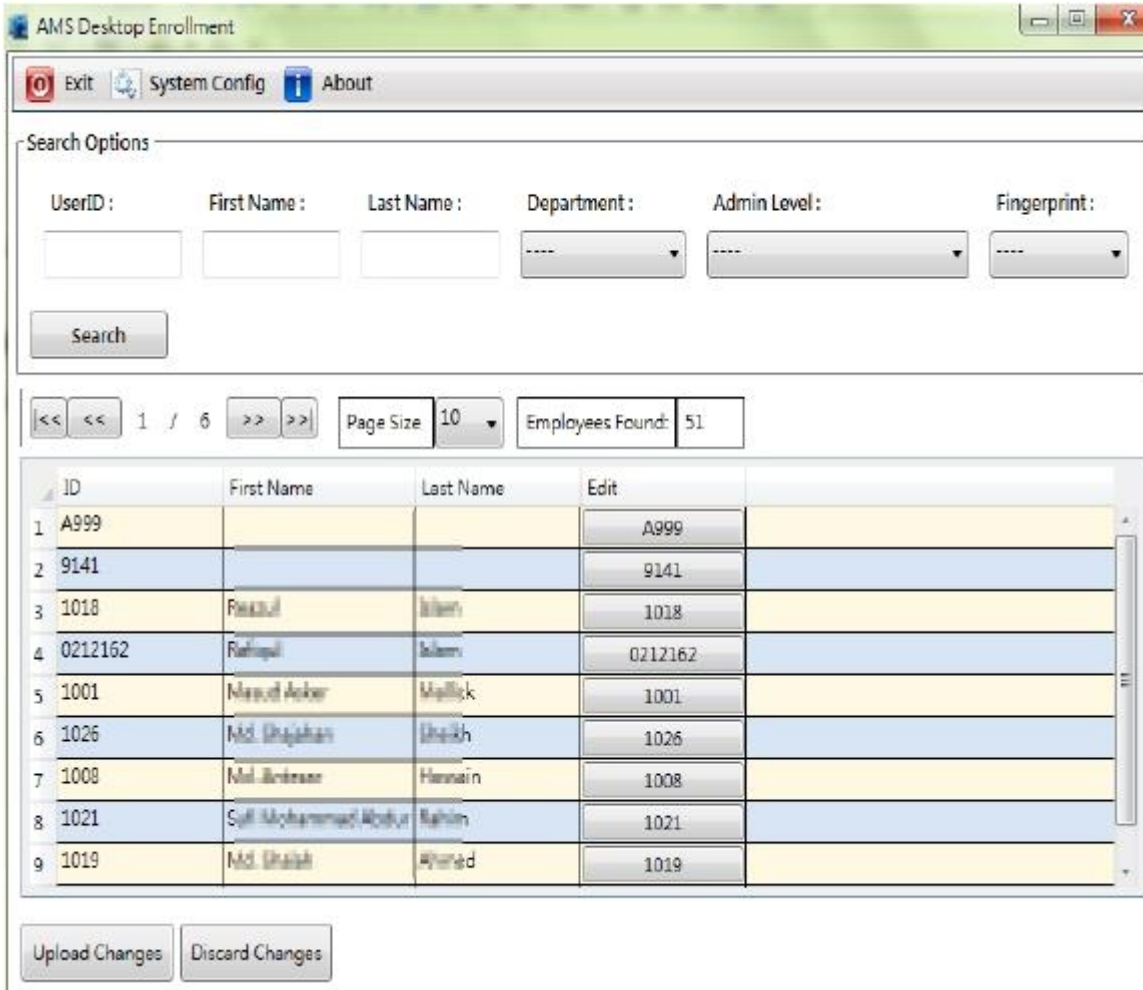
And enter the AMS Server IP address, and also the User Name/Password of AMS Login.

Once done, click [Login] button to get the User lists of AMS.

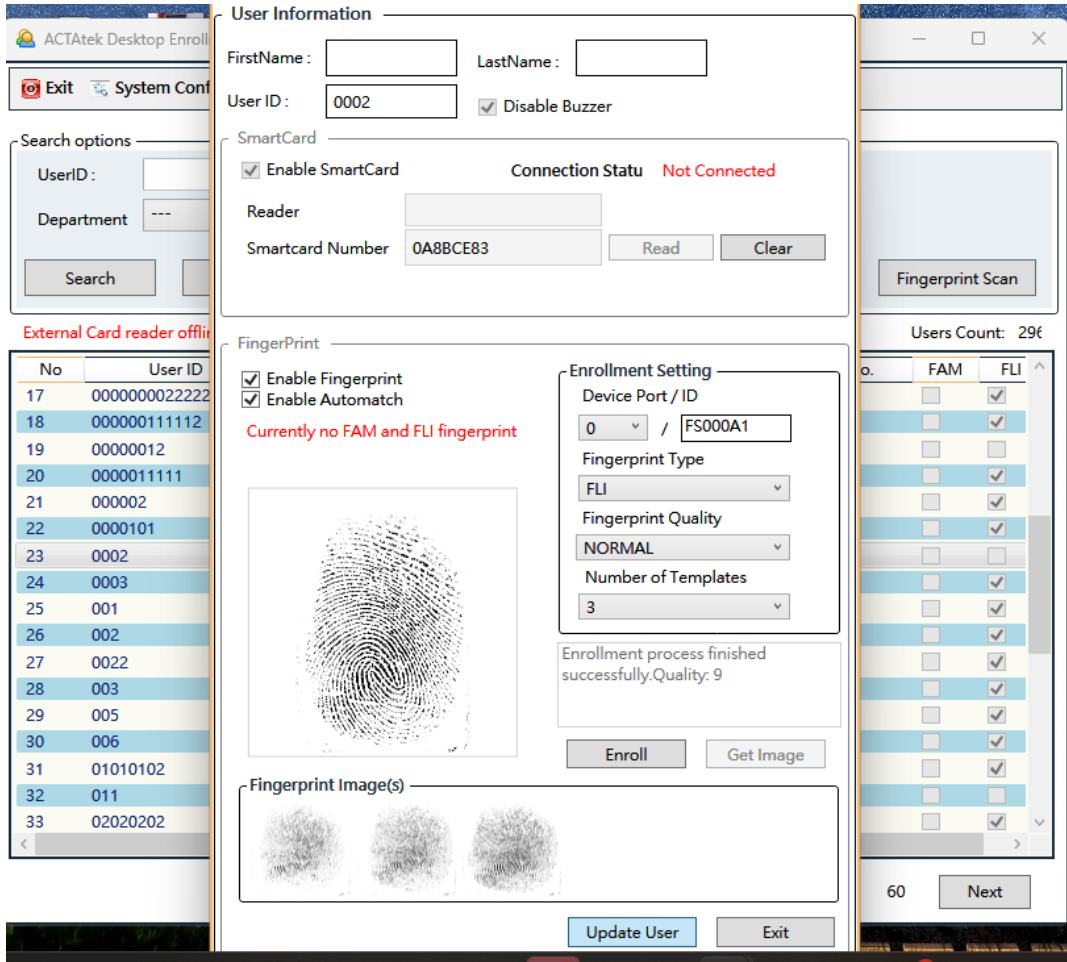


### 4 Registering/Updating fingerprint

To register or update the user's fingerprint , double-click on the user ID to start to do the enrollment.



1. Select [Enable FingerPrint] ,and [Enable Automatch] option.
2. Select [FLI] as Fingerprint Type.
3. Click [Start Fingerprint Scan] button, and then put the finger 3 times at FingerPrint scanner.
4. Click [Update] button to finish the FingerPrint enrollment.



- 5.The client can continue to double click the other User ID to do the FingerPrint enrollment.
- 6.Once finished all Users' FingerPrint enrollment,click [Upload Changes] button to update to AMS database.
- 7.After that,AMS will download the Users' FP data to all the registered ACTatek devices.

